
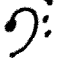











GIRLS CHORALE

Qtr. 1 & 2 Study Guide

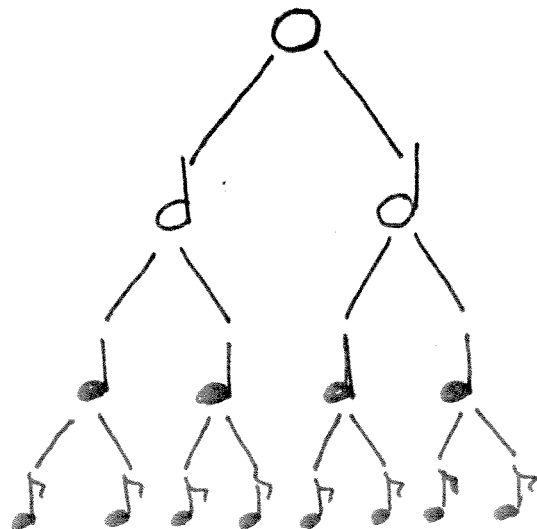
TERMS/SYMBOLS:

1. Treble Clef (G Clef) = 
2. Bass Clef (F Clef) = 
3. Fermata () = to hold
4. Crescendo () = gradually get louder
5. Decrescendo () = gradually get softer
6. Staccato = short; detached ()
7. Legato = smooth & connected
8. Piano (*p*) = soft
9. Mezzo piano (*mp*) = medium soft
10. Pianissimo (*pp*) = very soft
11. Forte (*f*) = loud
12. Mezzo forte (*mf*) = medium loud
13. Fortissimo (*ff*) = very loud


NOTES:


- | | |
|---|-----------------------|
|  | Whole (4 beats) |
|  | Dotted Half (3 beats) |
|  | Half (2 beats) |
|  | Quarter (1 beat) |
|  | Eighth (1/2 beat) |


RESTS:





TIME SIGNATURES/METERS:

$\frac{4}{4}$ = 4 beats per measure
 $\frac{4}{4}$ = quarter note () gets the beat

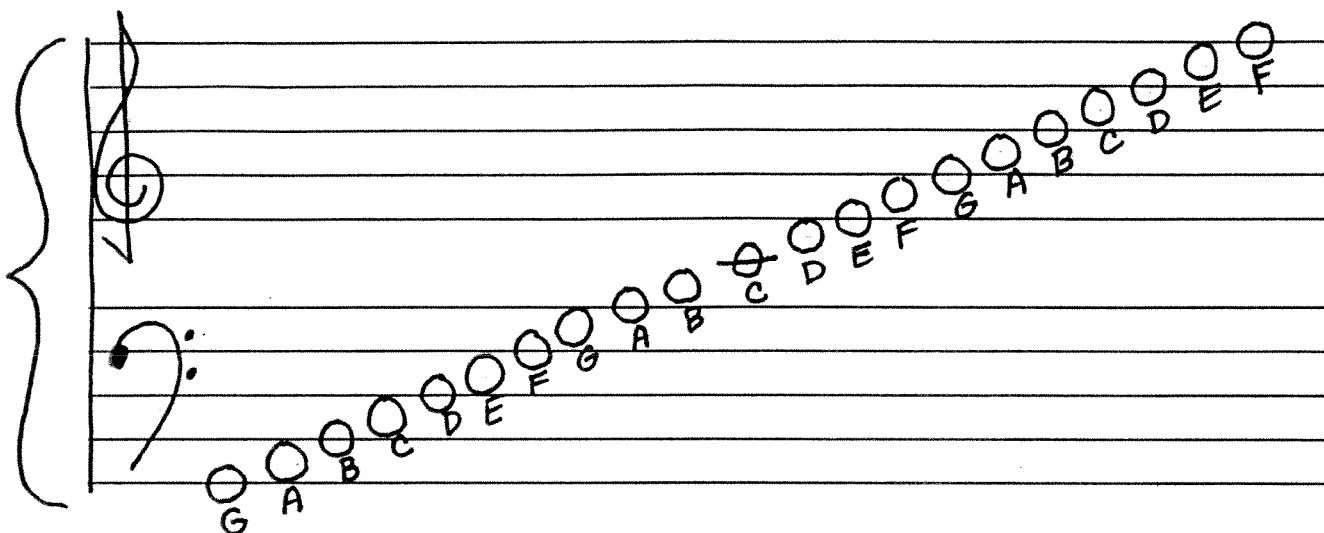
$\frac{3}{4}$ = 3 beats per measure
 $\frac{4}{4}$ = quarter note () gets the beat

$\frac{2}{4}$ = 2 beats per measure
 $\frac{4}{4}$ = quarter note () gets the beat

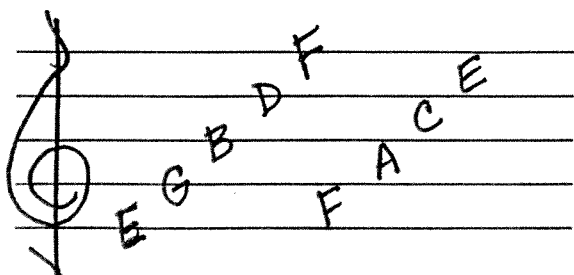
$\frac{6}{8}$ = 6 beats per measure
 $\frac{8}{8}$ = eighth note () gets the beat

$\frac{2}{2}$ = 2 beats per measure
 $\frac{2}{2}$ = half note () gets the beat

GRAND STAFF:



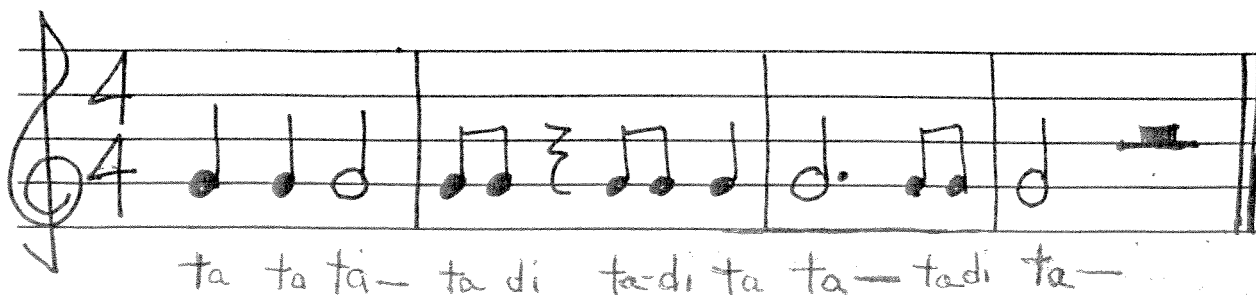
NOTE NAMES (Treble Clef):



Lines = Every Good Boy Does Fine

Spaces = F - A - C - E

RHYTHM COUNTING: (example)



Takadimi Syllables

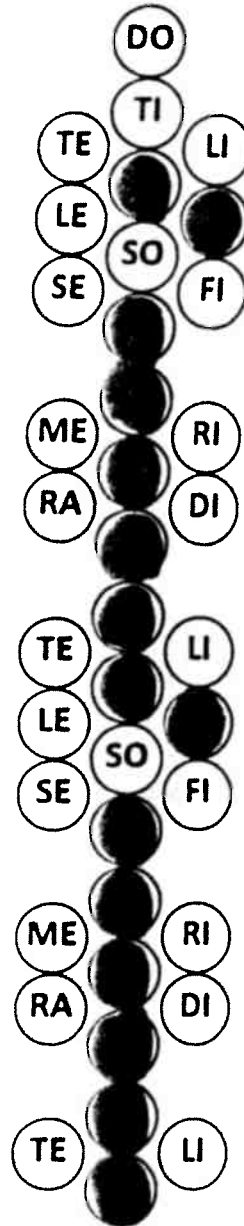
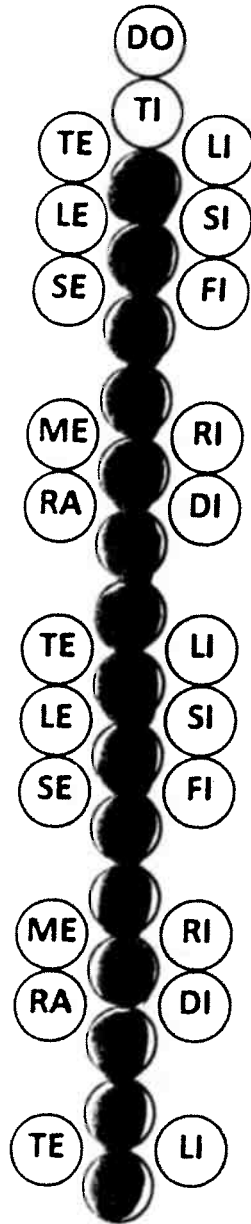
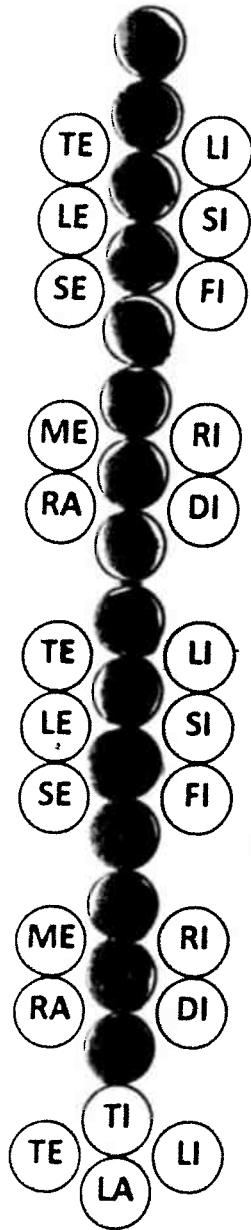
Simple Meter

1 □ □□□
Ta Ta di Ta ka Di Mi

Compound Meter

1. □□ □□□□
Ta Ta ki da Ta Va Ki Di Da Ma

Solfeggio Syllable Chart



1. Major Scale

2. Natural minor

3. Harmonic minor