
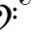





GIRLS CHORALE

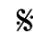
Qtr. 4 Study Guide

TERMS /SYMBOLS:

1. **Treb Clef (G Clef)** = 
2. **Bass Clef (F Clef)** = 
3. **Fermata** (◡) = to hold
4. **Crescendo** (◁) = gradually get louder
5. **Decrescendo** (▷) = gradually get louder
6. **Staccato** = short; detached ()
7. **Legato** = smooth & connected ()

8. **Piano** (*p*) = soft
9. **Mezzo piano** (*mp*) = medium soft
10. **Pianissimo** (*pp*) = very soft
11. **Forte** (*f*) = loud
12. **Mezzo forte** (*mf*) = medium loud
13. **Fortissimo** (*ff*) = very loud

14. **A cappella** = choral music generally without accompaniment; literally – in the style of the chapel.
15. **Accelerando** (**Accel.**) or **Stringendo** (**String.**) = gradually growing faster
16. **Accent** (<) = emphasis or stress on one tone over others
17. **Alla Breve** = indicating 2/2 time or “cut time”; literally – on the breve (half note)
18. **Coda** = a section added at the end of a composition or passage as a conclusion () 
19. **Divisi** = to divide; as into parts
20. **Unison** = voices on the same pitch or mixed voices in octaves






21. **A tempo** = return to the original tempo
22. **Da capo** (**D.C.**) = to return and perform from the beginning
23. **Del segno** (**D.S.**) = to return and perform from the sign () 
24. **Interval** = the distance or relation between two pitches
25. **Key Signature** = a grouping of accidentals placed at the beginning of a composition or section to indicate key.
26. **Poco a poco** = little by little
27. **Ritardando** (**Rit.**) = gradually slower
28. **Time Signature** = a symbol indicating the type of meter and the unit of beat (ex: 4/4, 6/8 ..)

29. **Allargando** = growing broader, that is, louder and slower.
30. **Animato** = animated; excited; with life and spirit.
31. **Caesura** (//) = a break in the music
32. **Dissonance** = a relation or state of tension between various tones.
33. **Modulation** = a change of key within a composition.
34. **Molto** = much, very.
35. **Phrase** = a natural division of the melodic line with a cadence; comparable to a clause or sentence.
36. **Sforzando** (**sf** or **sfz**) = forced or accented

37. **Temp** = the pace at which a composition is to be performed; rate of speed.

- a. **Largo** = very slow
- b. **Larghetto** = less slow than largo
- c. **Lento** = moderately slow
- d. **Andante** = moderate, walking tempo
- e. **Allegro** = fast
- f. **Vivace** = very fast and lively

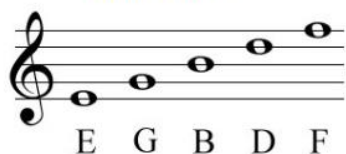
NOTES:

	Whole
	Dotted Half
	Half
	Quarter
	Eighth

RESTS:



Line Notes



Space Notes



Lines = Every Good Boy Does Fine

Spaces = F - A - C - E

KEY SIGNATURES: (***NO** sharps or flats = Key of c major!)

Sharp Keys

The Major key is 1/2 step

Key of G Key of D Key of A Key of E Key of B Key of F# Key of C#

Flat Keys

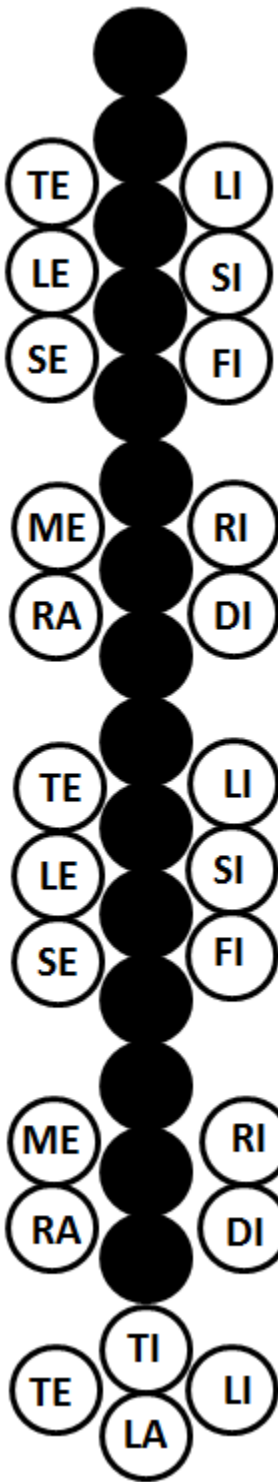
The Major Key is the same as the next to the last flat.

Key of F Key of B^b Key of E^b Key of A^b Key of D^b Key of G^b Key of C^b

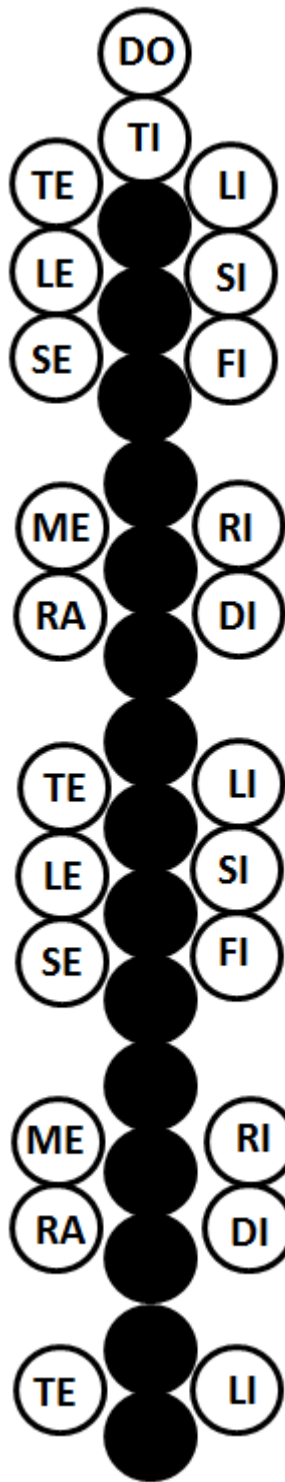
SOLFEGE LABELING: (DO RE MI FA SO LA TI DO')

Key of F: D R M M F S L S L T D' S M R R D

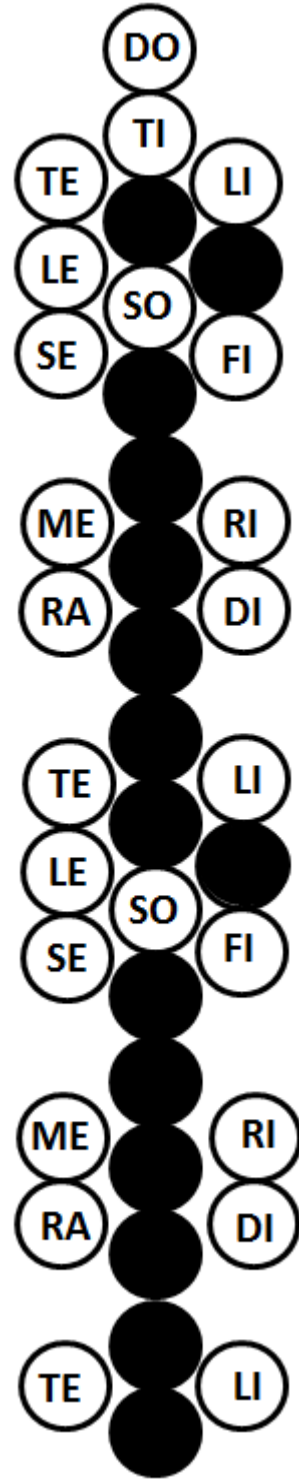
Solfeggio Syllable Chart



1. Major Scale



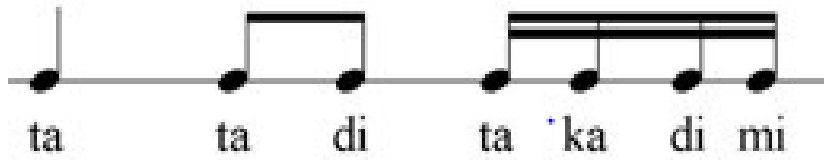
2. Natural Minor



3. Harmonic Minor

Takadimi Syllables

Simple Meter



Compound Meter

Copyright © 2014 by Linda Ward Beech

