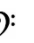
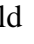
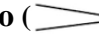


GIRLS CHORALE

First Semester Study Guide

TERMS /SYMBOLS:

1. **Treb Clef (G Clef)** = 
2. **Bass Clef (F Clef)** = 
3. **Fermata** () = to hold
4. **Crescendo** () = gradually get louder
5. **Decrescendo** () = gradually get Softer
6. **Staccato** = short; detached ()
7. **Legato** = smooth & connected ()
8. **Piano** (*p*) = soft
9. **Mezzo piano** (*mp*) = medium soft
10. **Pianissimo** (*pp*) = very soft
11. **Forte** (*f*) = loud
12. **Mezzo forte** (*mf*) = medium loud
13. **Fortissimo** (*ff*) = very loud

NOTES:



Whole



Dotted Half



Half

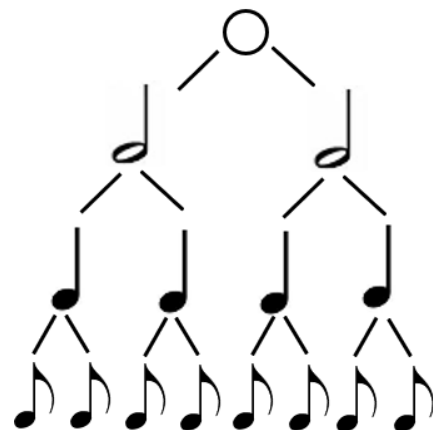


Quarter



Eighth

RESTS:



TIME SIGNATURES/METERS

$\frac{4}{4}$ = 4 beats per measure
 $\frac{4}{4}$ = quarter note (♩) gets the beat

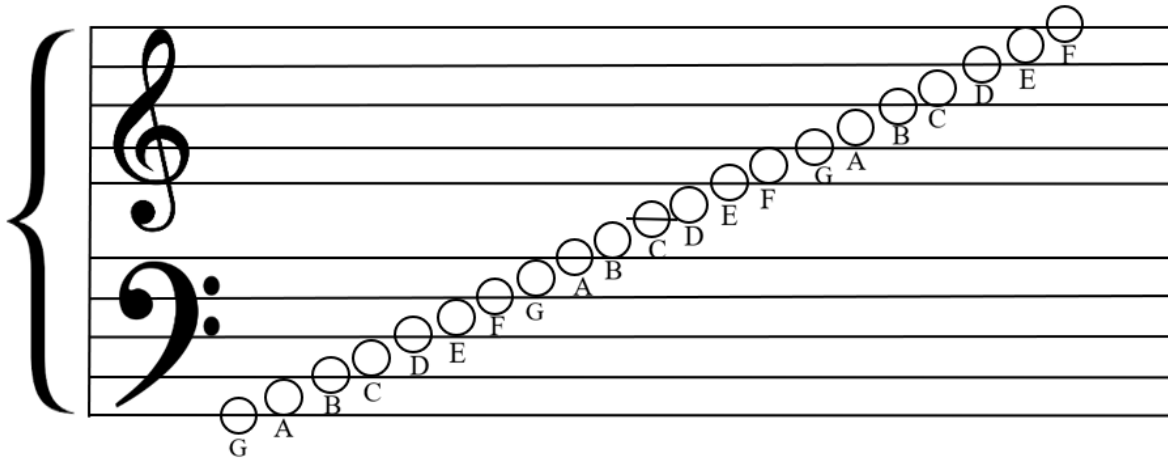
$\frac{6}{8}$ = 6 beats per measure
 $\frac{8}{8}$ = eight note (♩) gets the beat

$\frac{3}{4}$ = 3 beats per measure
 $\frac{4}{4}$ = quarter note (♩) gets the beat

$\frac{2}{2}$ = 2 beats per measure
 $\frac{2}{2}$ = half note (♩) gets the beat

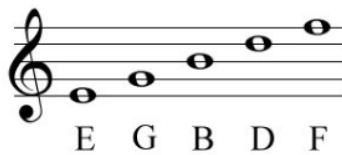
$\frac{2}{4}$ = 2 beats per measure
 $\frac{4}{4}$ = quarter note (♩) gets the beat

Grand Staff



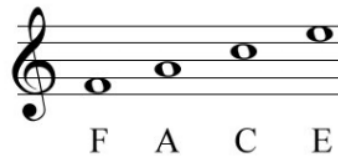
NOTE NAMES (Treble Clef)

Line Notes



Lines = Every Good Boy Does Fine

Space Notes



Spaces = F - A - C - E






RHYTHM COUNTING (example)

ta ta ta - ta di ta-di ta ta - ta di ta -

Temp = the pace at which a composition is to be performed; rate of speed.

- a. **Largo** = very slow
- b. **Larghetto** = less slow than largo
- c. **Lento** = moderately slow
- d. **Andante** = moderate, walking tempo
- e. **Allegro** = fast
- f. **Vivace** = very fast and lively

NOTES:

	Whole
	Dotted Half
	Half
	Quarter
	Eighth

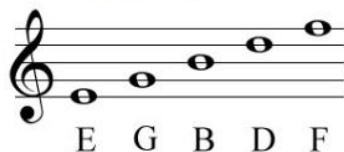
RESTS:



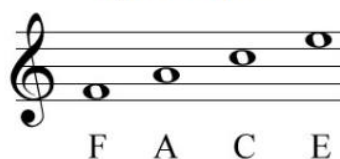




Line Notes



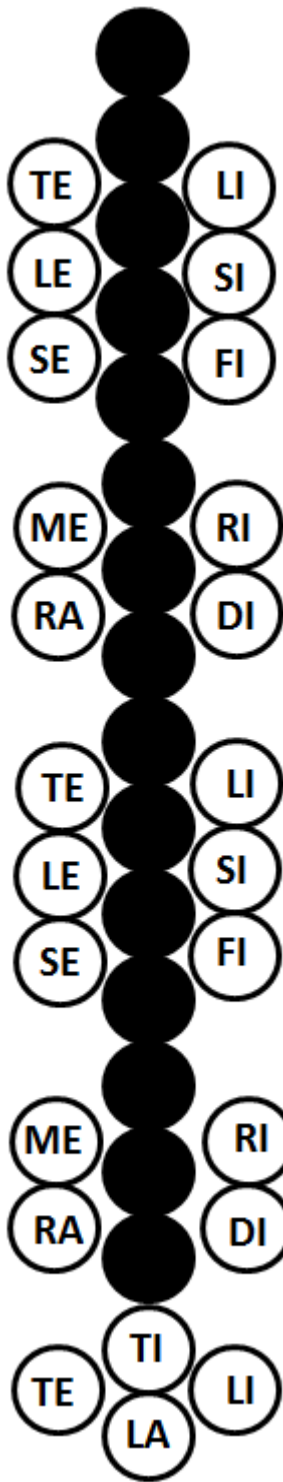
Space Notes



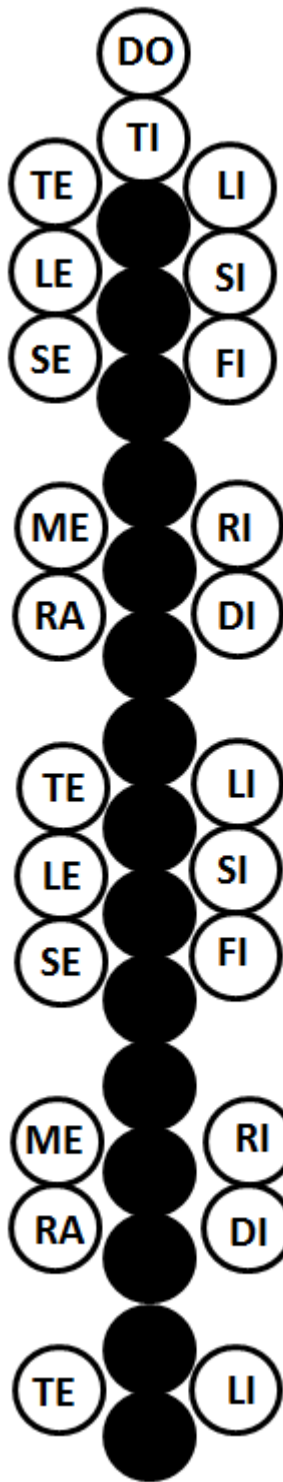
Lines = Every Good Boy Does Fine

Spaces = F - A - C - E

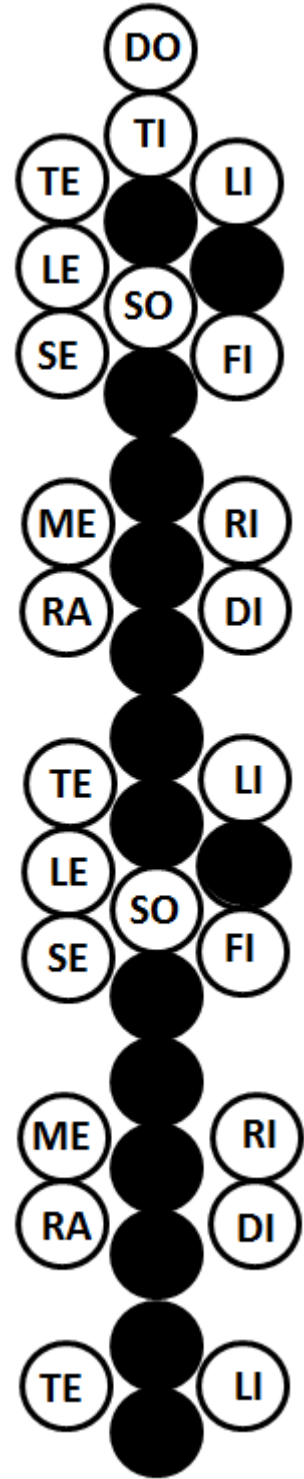
Solfeggio Syllable Chart



1. Major Scale



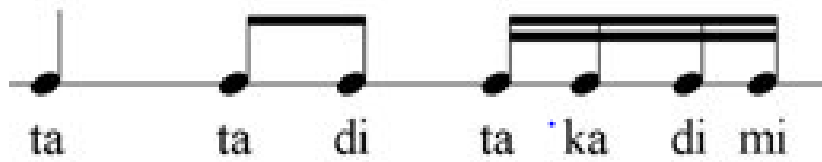
2. Natural Minor



3. Harmonic Minor

Takadimi Syllables

Simple Meter



Compound Meter

